

# EA Installation Guide

## MT5

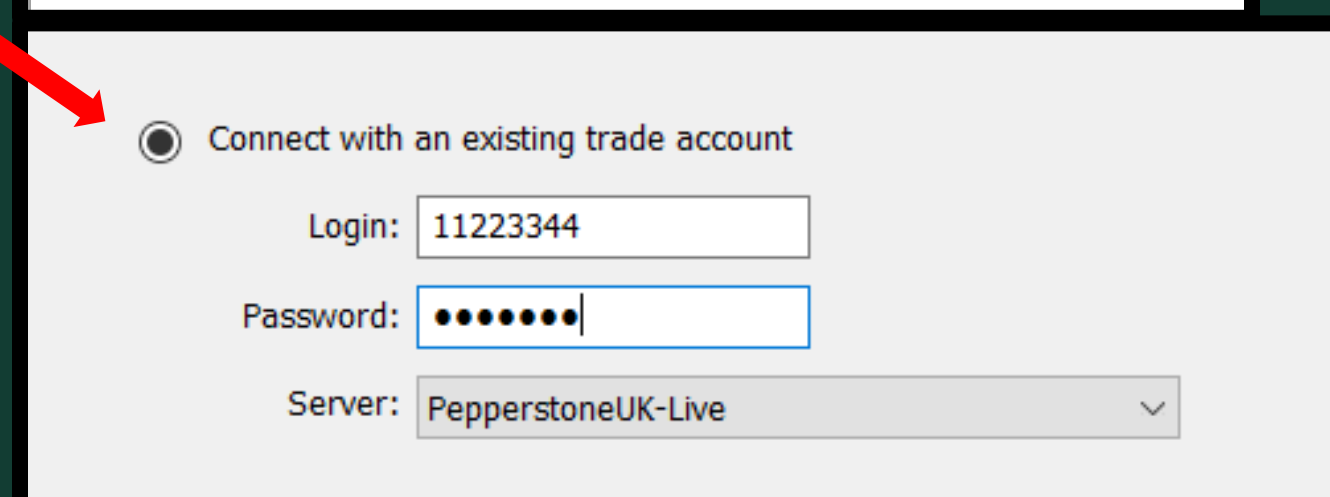
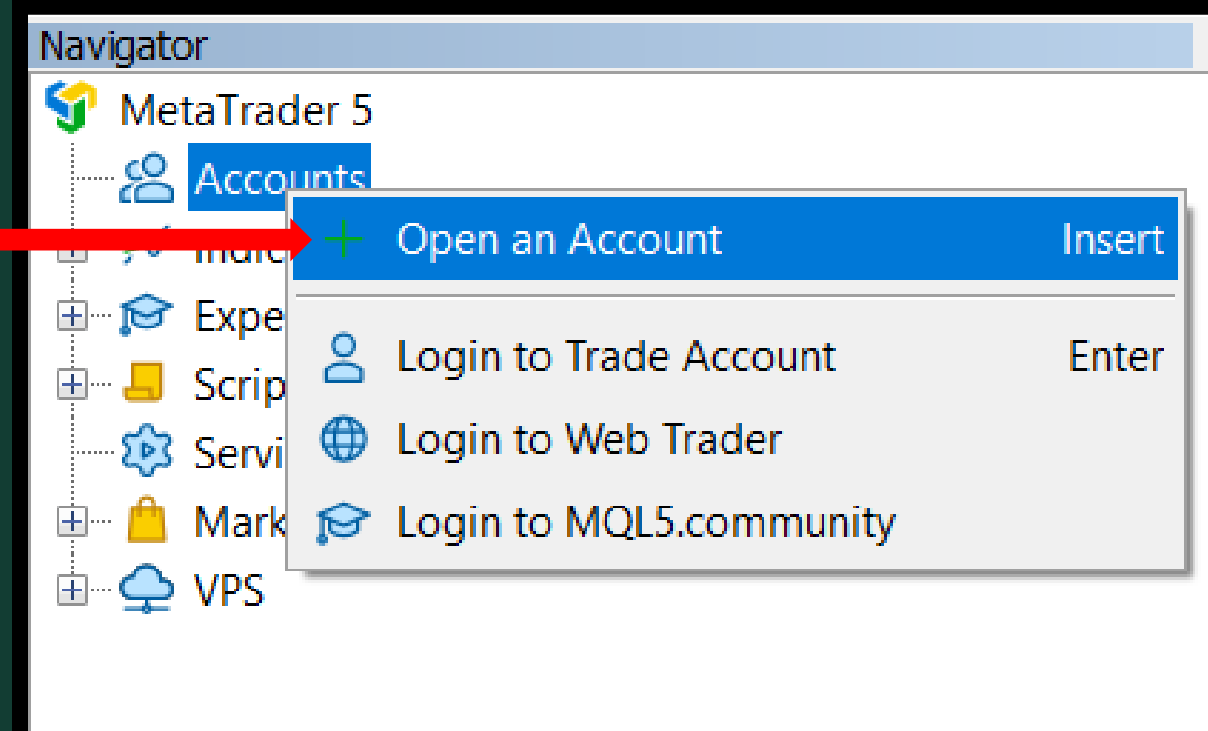
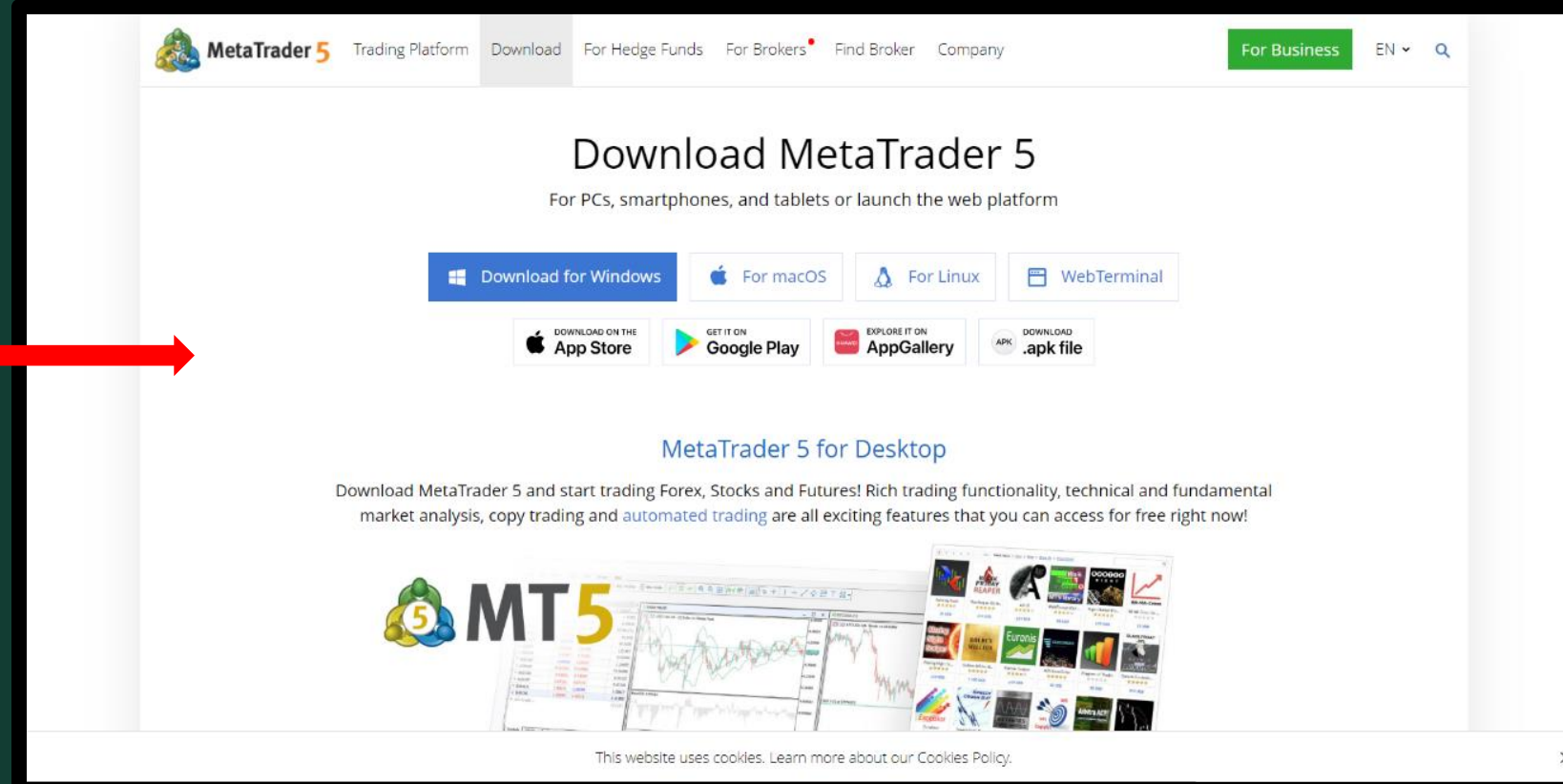
[www.aimetrics.io](http://www.aimetrics.io)



1) Visit the official MetaTrader 5 website and download the platform for your operating system.

<https://www.metatrader5.com/en/download>

1.1) Open MetaTrader5, set up and connect to an account with your preferred broker.



2) Download the Expert Advisor(s)

.ex5 file (s) provided by Aimetric

(e.g.,Forex\_Daily\_High.ex5) from

Aimetrics © Usually found in your

local 'Downloads' folder.

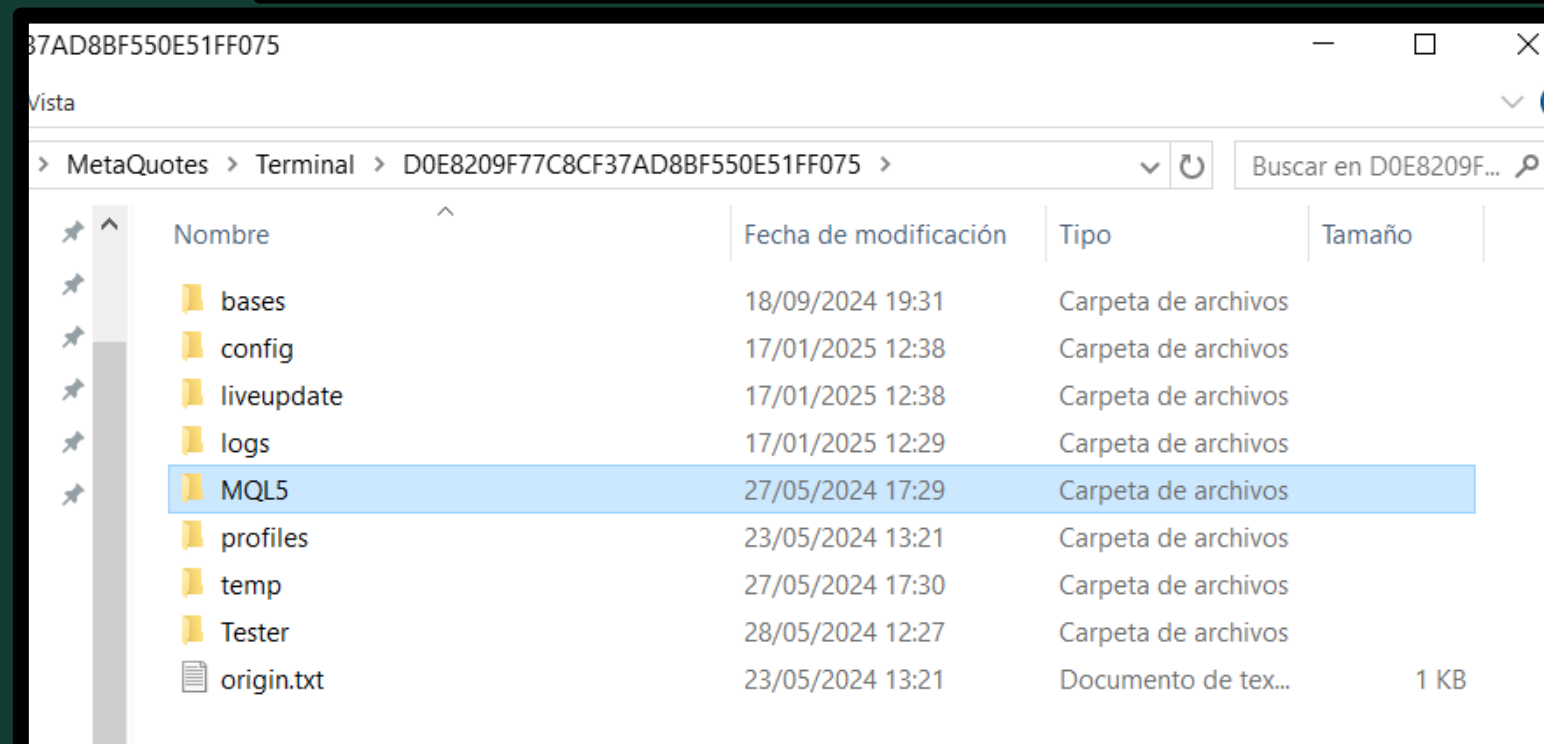
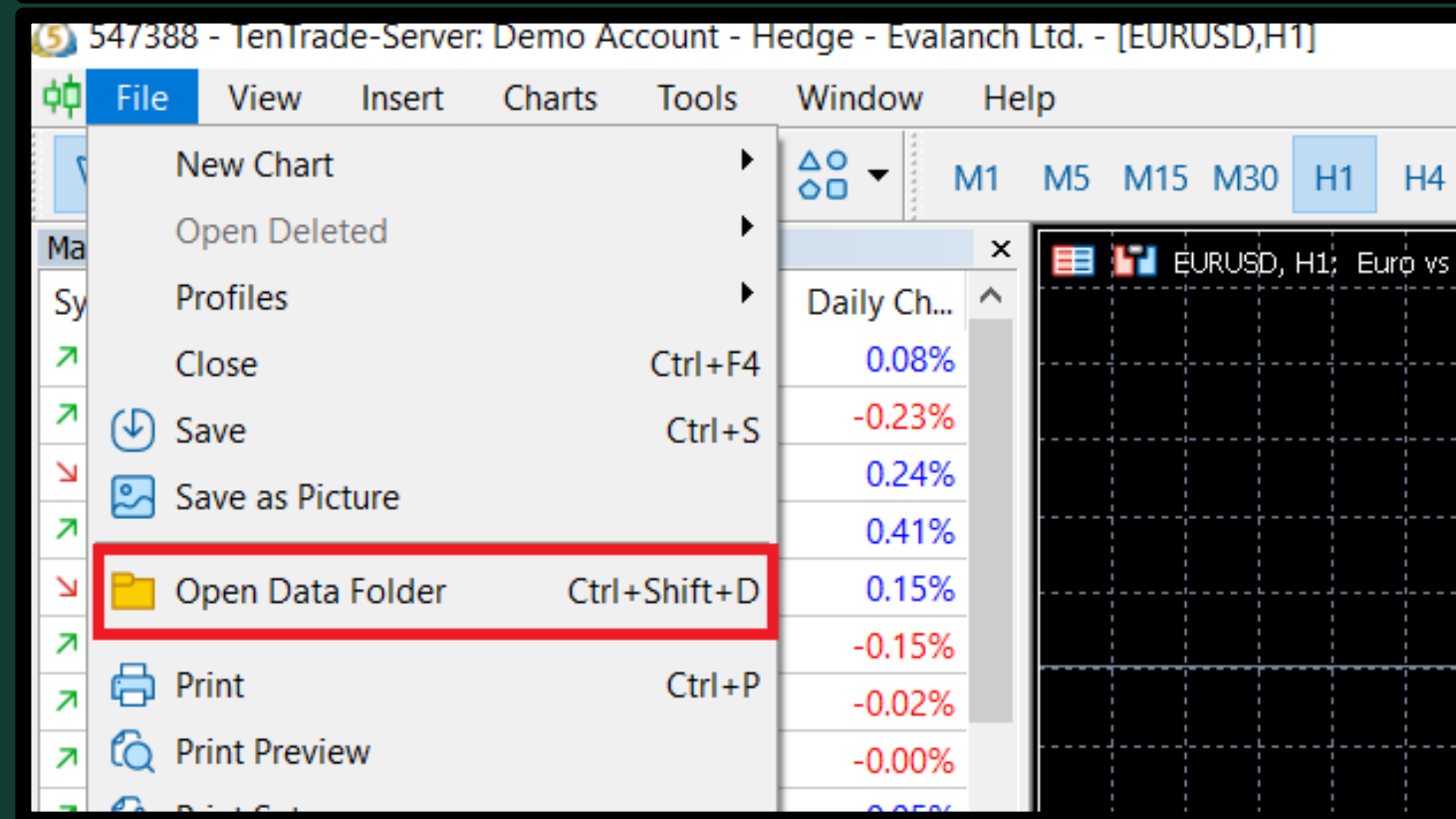
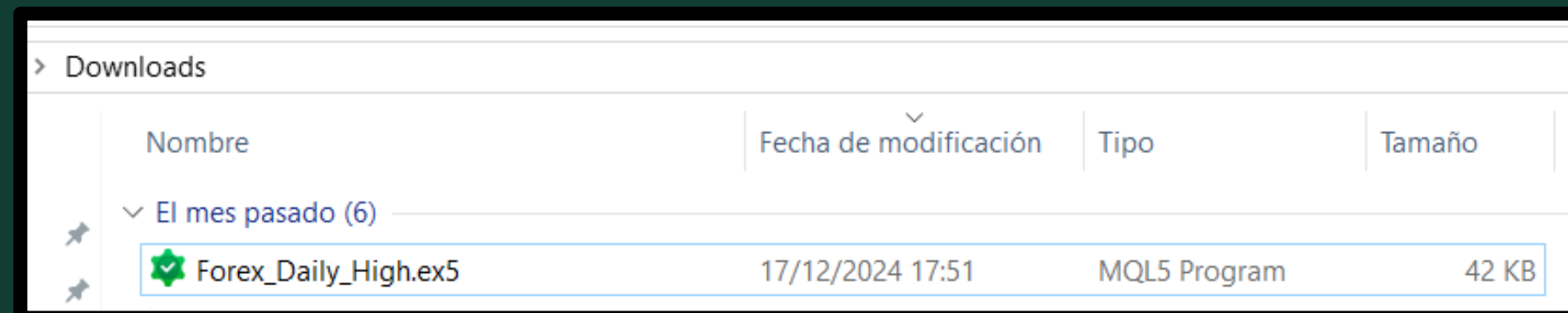
3) In Metatrader 5, click on 'File' in

the top menu and select 'Open Data

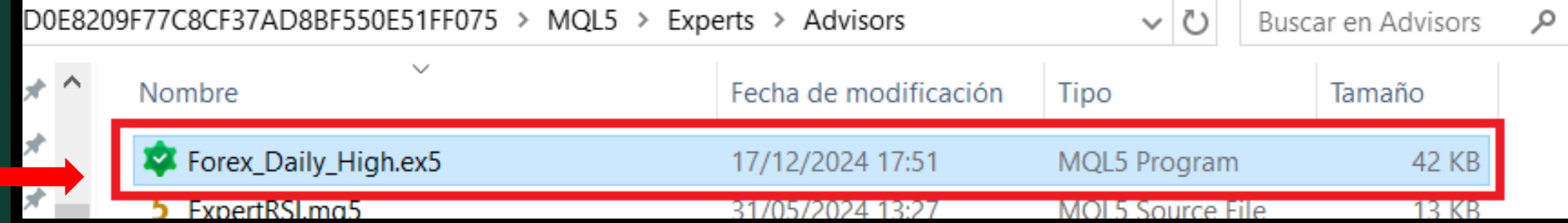
Folder'.

3.1) Inside the data folder, find and

open the 'MQL5' folder, then 'Experts'

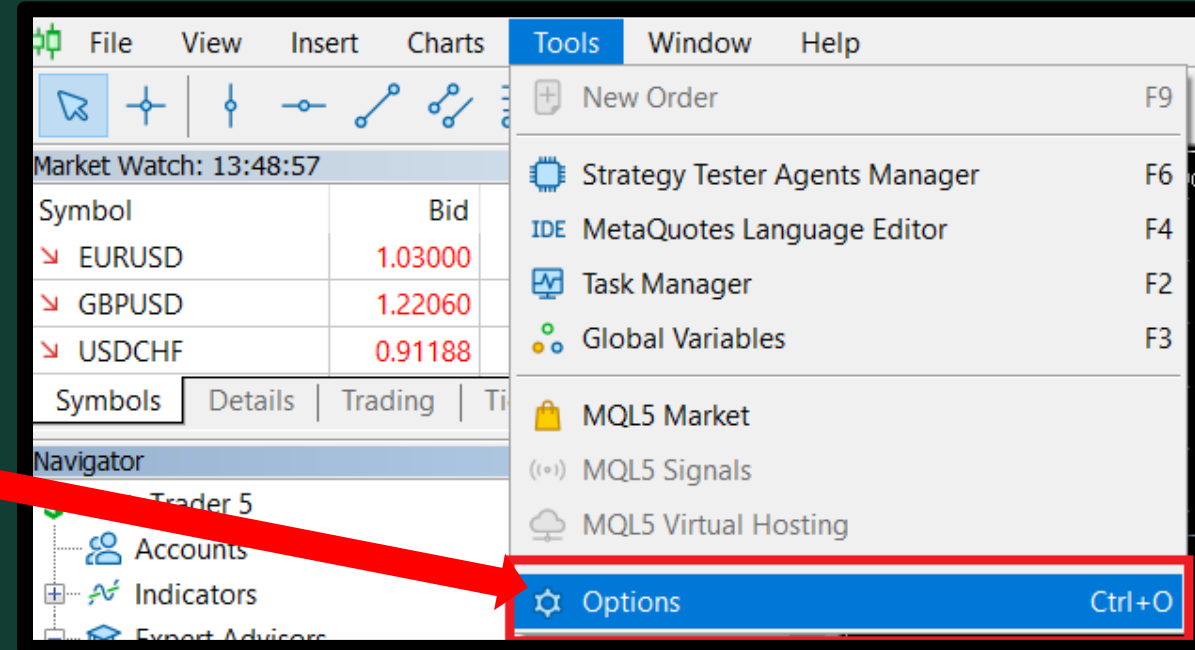


4) Place your downloaded .ex5 file into the 'Experts' folder.

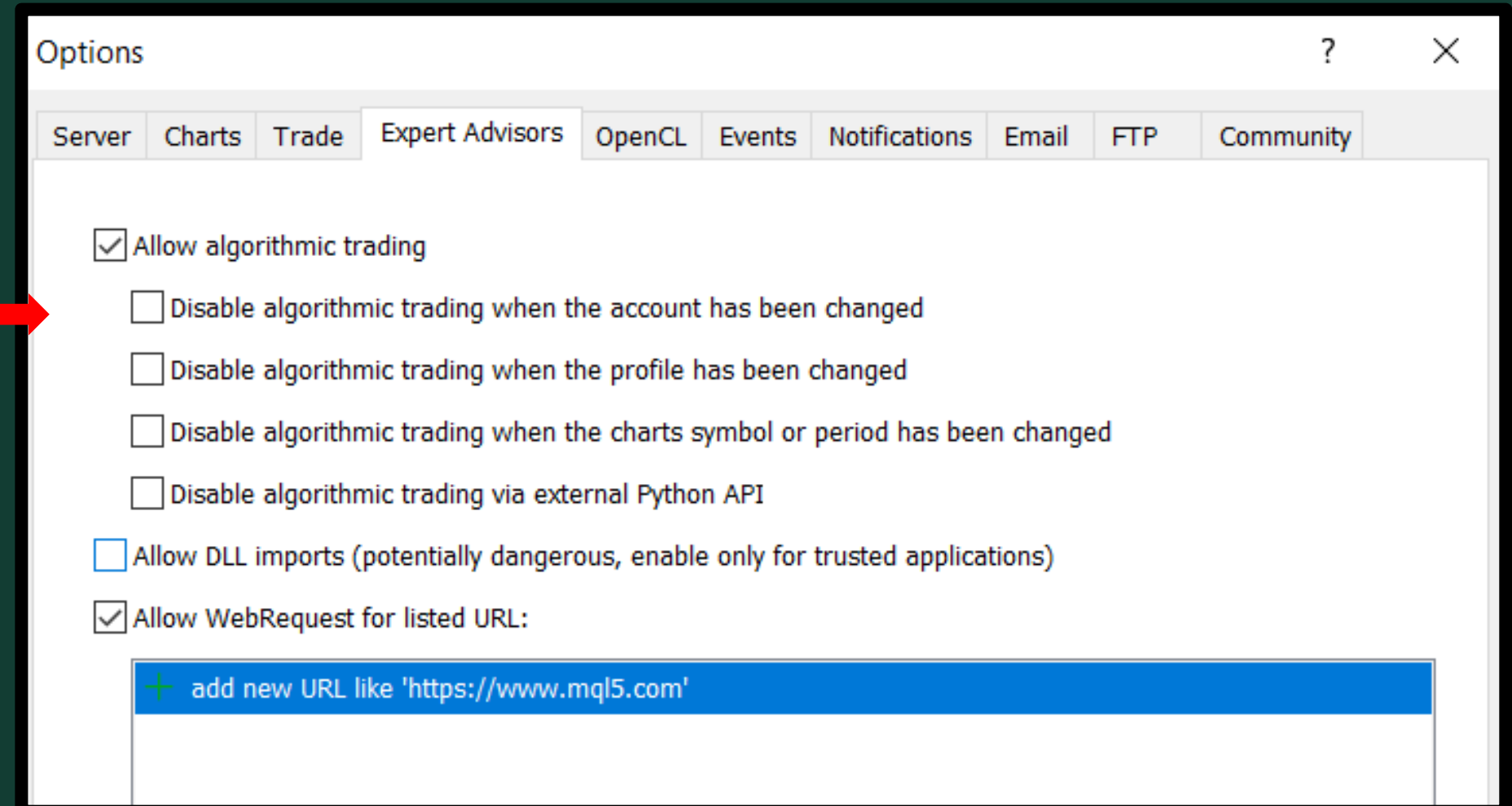


5) Restart your MetaTrader 5 terminal to load the EA correctly.

5.1) in MetaTrader, go to 'Tools' and click on the 'Options' button.



5.2) In the pop-up window, ensure the correct settings are checked as illustrated in the guide.

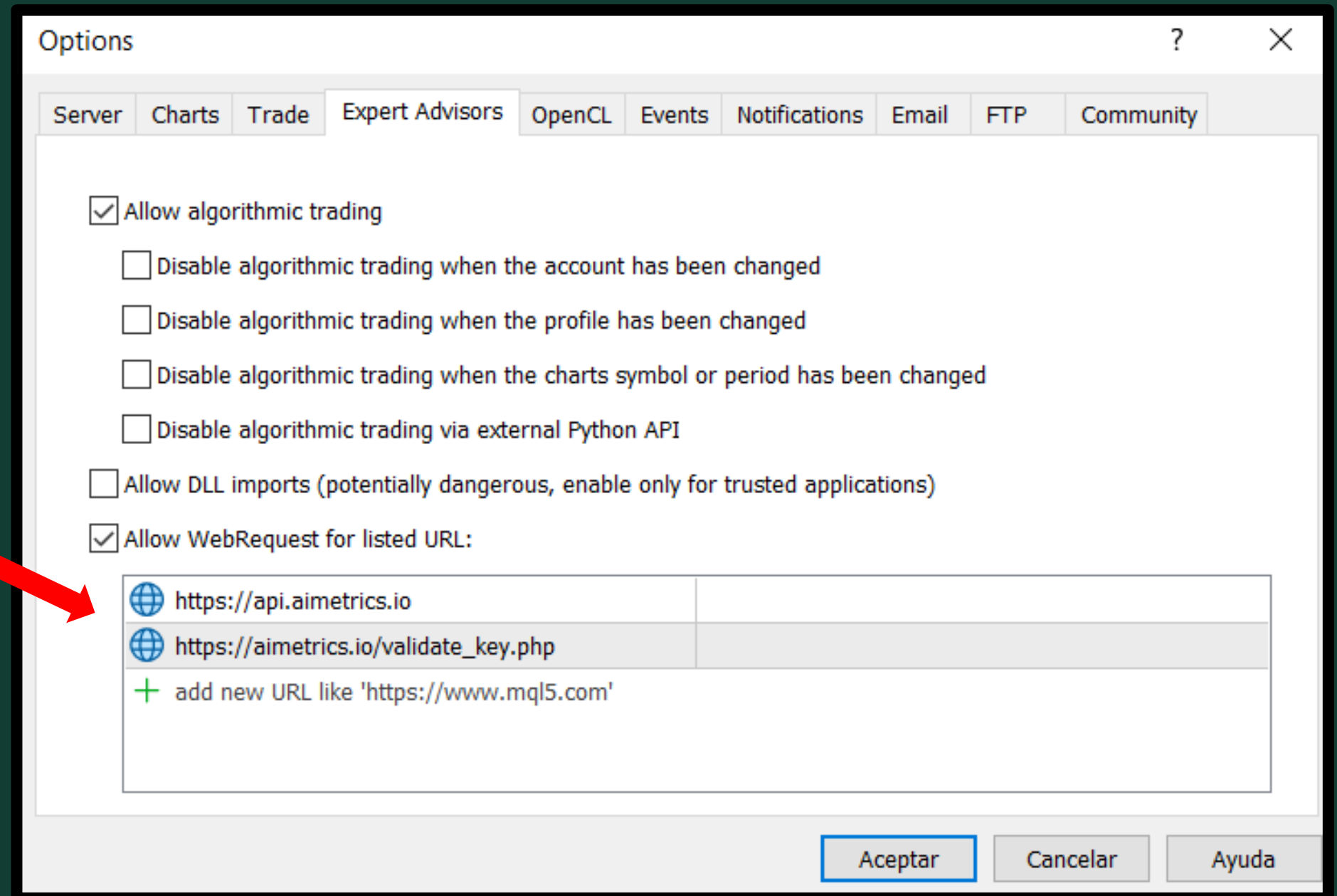


**5.3) Manually add the following URL's to your settings as shown in the guide:**

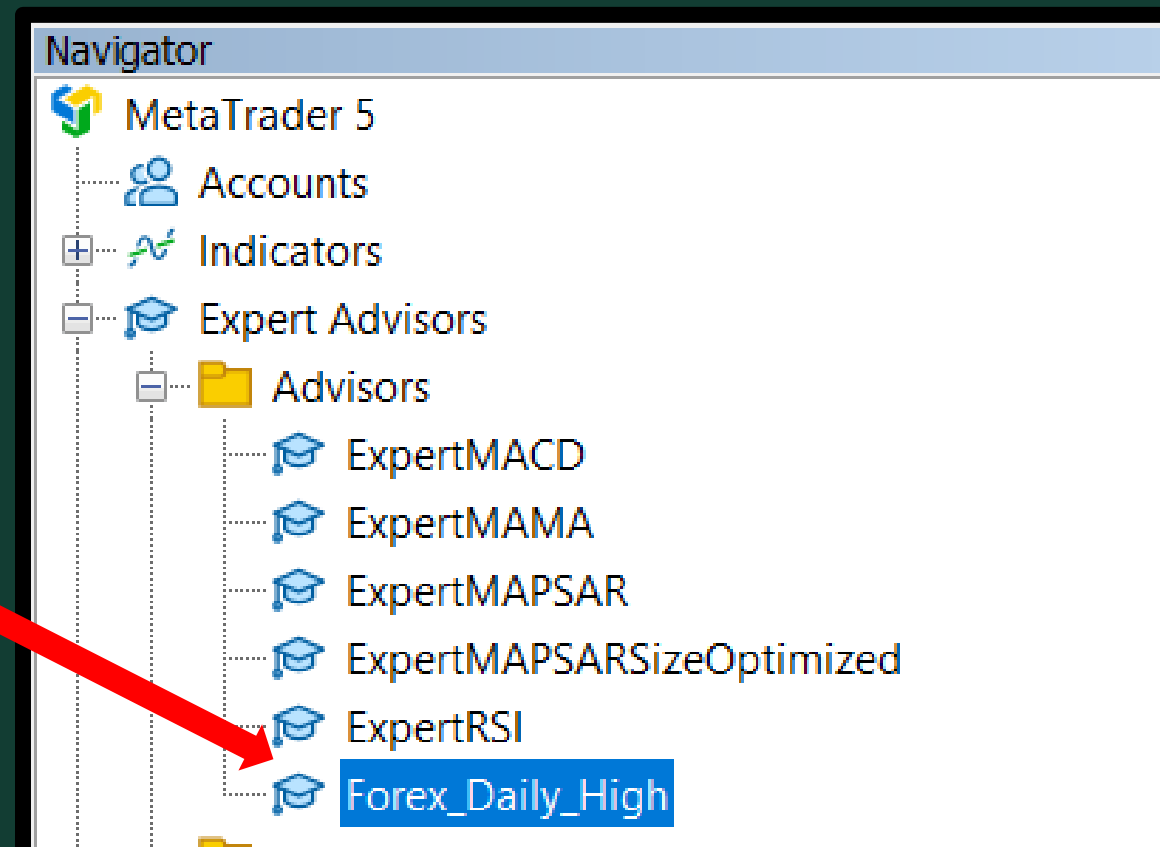
***api.aimetrics.io***

***aimetrics.io/validate\_key.php***

**Click 'Accept' to save your settings.**

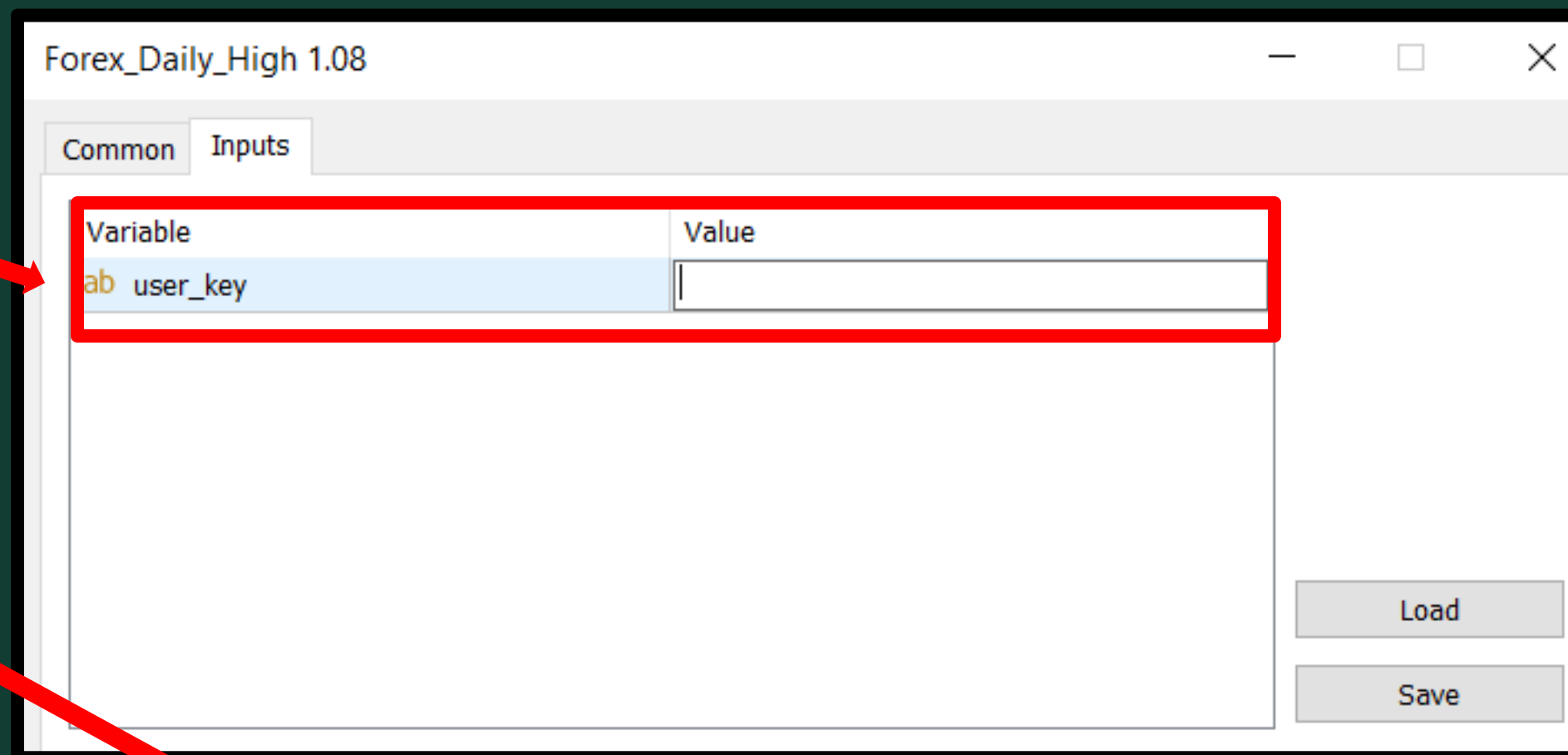


**6) Locate your EA in the 'Navigator' under 'Expert Advisors', drag and drop it onto the desired chart.**

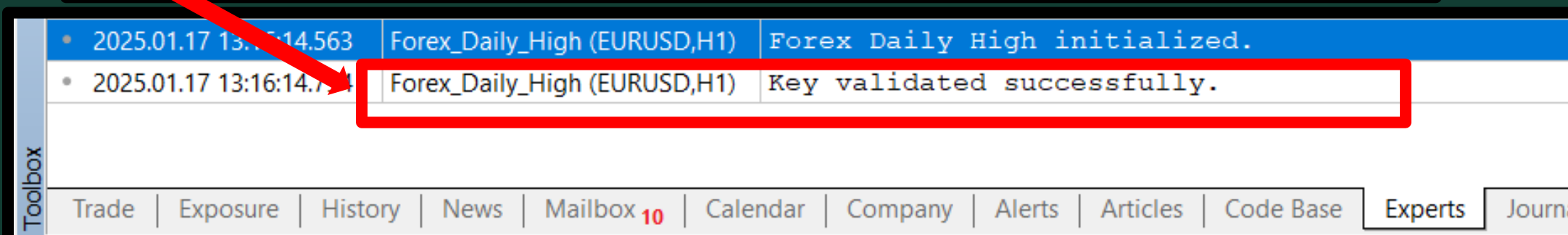


7) When you drag the EA onto the chart, a settings window will appear.

Enter the key provided by the Aimetrics team in the 'Inputs' tab.



8) Confirm the EA is correctly positioned in the top right corner of your chart.



Note: Do not drag more than one EA onto a single chart.



EA's work automatically. Check the Experts and Trades tabs.

 **AIMetrics**

# Contact Us

 [info@robexia.com](mailto:info@robexia.com)

 [www.aimetrics.io](http://www.aimetrics.io)